

## GRAVITY DIVERTER VALVES

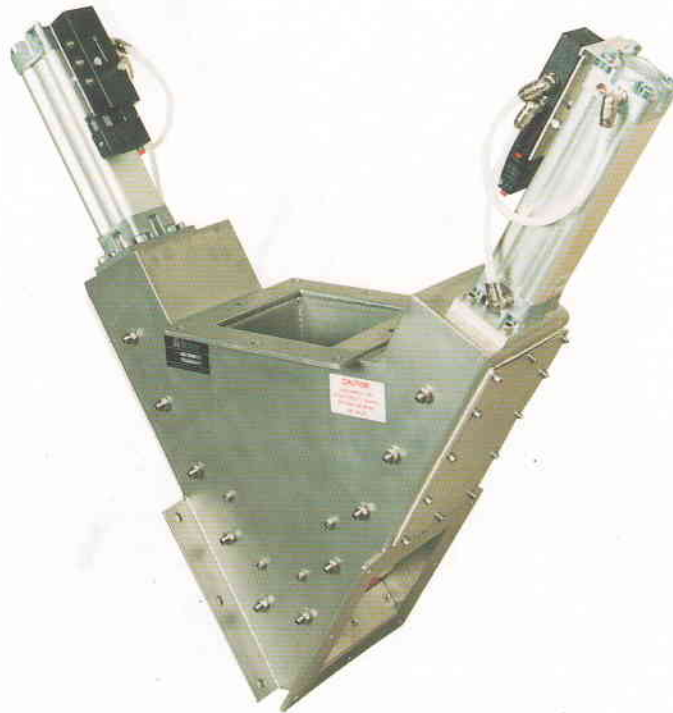
### PNEUMATIC TYPE GD

- MILD STEEL OR STAINLESS STEEL CONSTRUCTION
- SIZES 4 INCHES TO 12 INCHES
- DOUBLE SLIDE PLATE DESIGN
- PNEUMATIC OPERATION
- FULLY ENCLOSED, DUST-TIGHT
- DIVERTS AND STOPS PRODUCT

This valve is available in mild steel or stainless steel, making it an ideal choice for the control of gravity fed powders and granular bulk solids in the food, chemical, plastics, etc., industries.

The smooth internal faces ensure no lodgement areas and the individual control of the two slide plates diverts to the left or right or both closed (or open). Unlike flap type diverters, this valve can be operated whilst the product is flowing and can also act as a shut off valve. Maximum operating temperature 176°F (302°F to special order).

Operation is by a pair of pneumatic cylinders each controlled by a single solenoid valve. Reed switches can be supplied giving electrical indication of valve status. Switches and solenoid valves to customers' requirements, or for use in hazardous areas, can also be fitted.

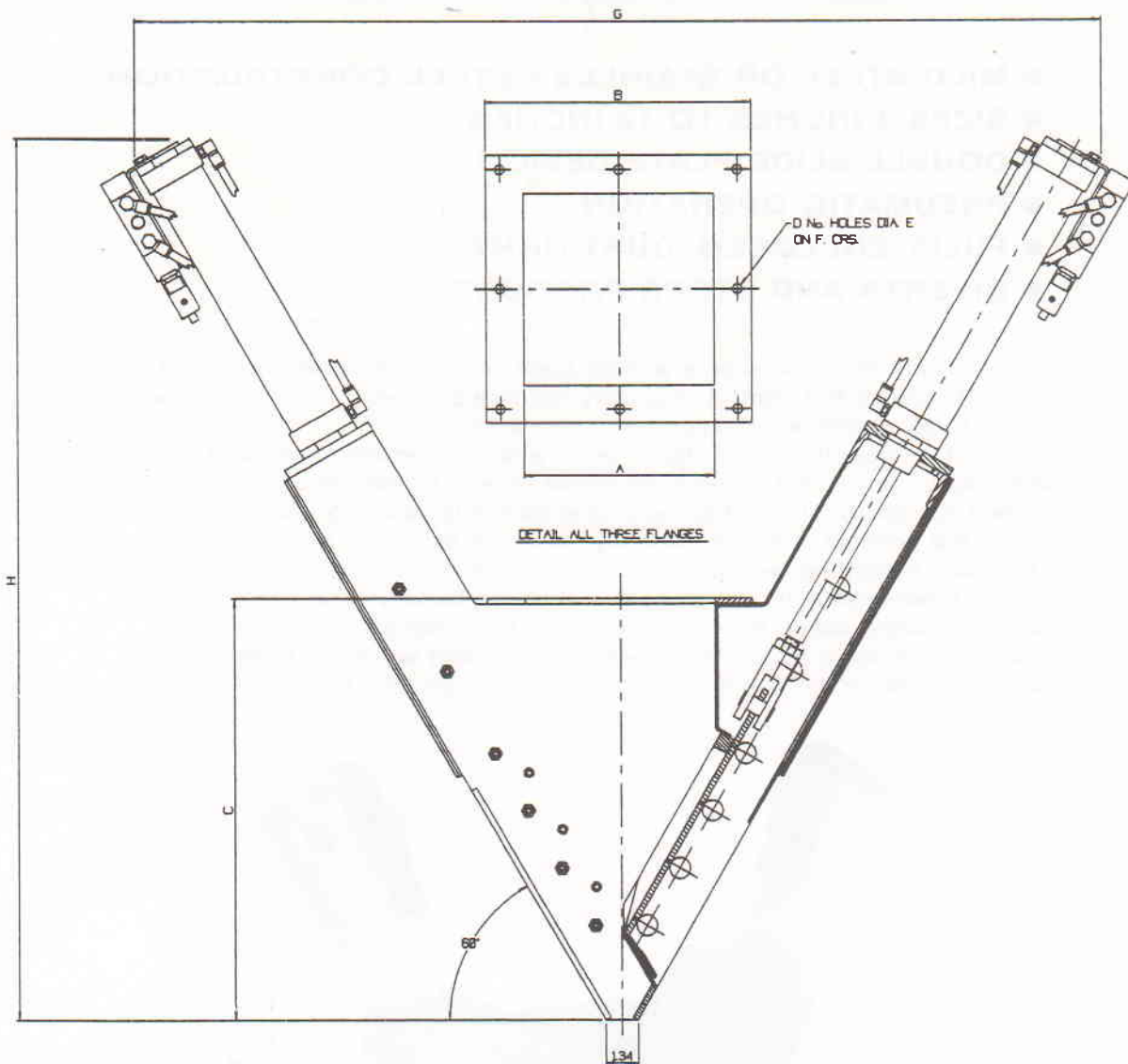


# Britton Procol

## VALVES

*See over for  
planning-in  
dimensions*

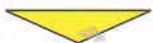




VALVE SIZE	A	B	C	D	E	F	G	H
100	4	7.00	14.17	8	3/8	2.95	27.56	25.20
150	6	9.00	15.75	8	3/8	3.94	33.46	30.31
200	8	11.00	17.52	8	3/8	4.92	39.37	35.43
250	10	13.00	19.29	8	3/8	5.91	45.28	40.55
300	12	15.00	21.06	16	1/2	3.46	52.00	46.46
350	14	17.00	22.83	16	1/2	3.94	59.00	52.00

We are continually developing our products and accordingly we reserve the right to change specifications and dimensions without prior notice.

**Britton Procol**  
**VALVES**



**800-304-8864**  
[www.dahnkesales.com](http://www.dahnkesales.com)