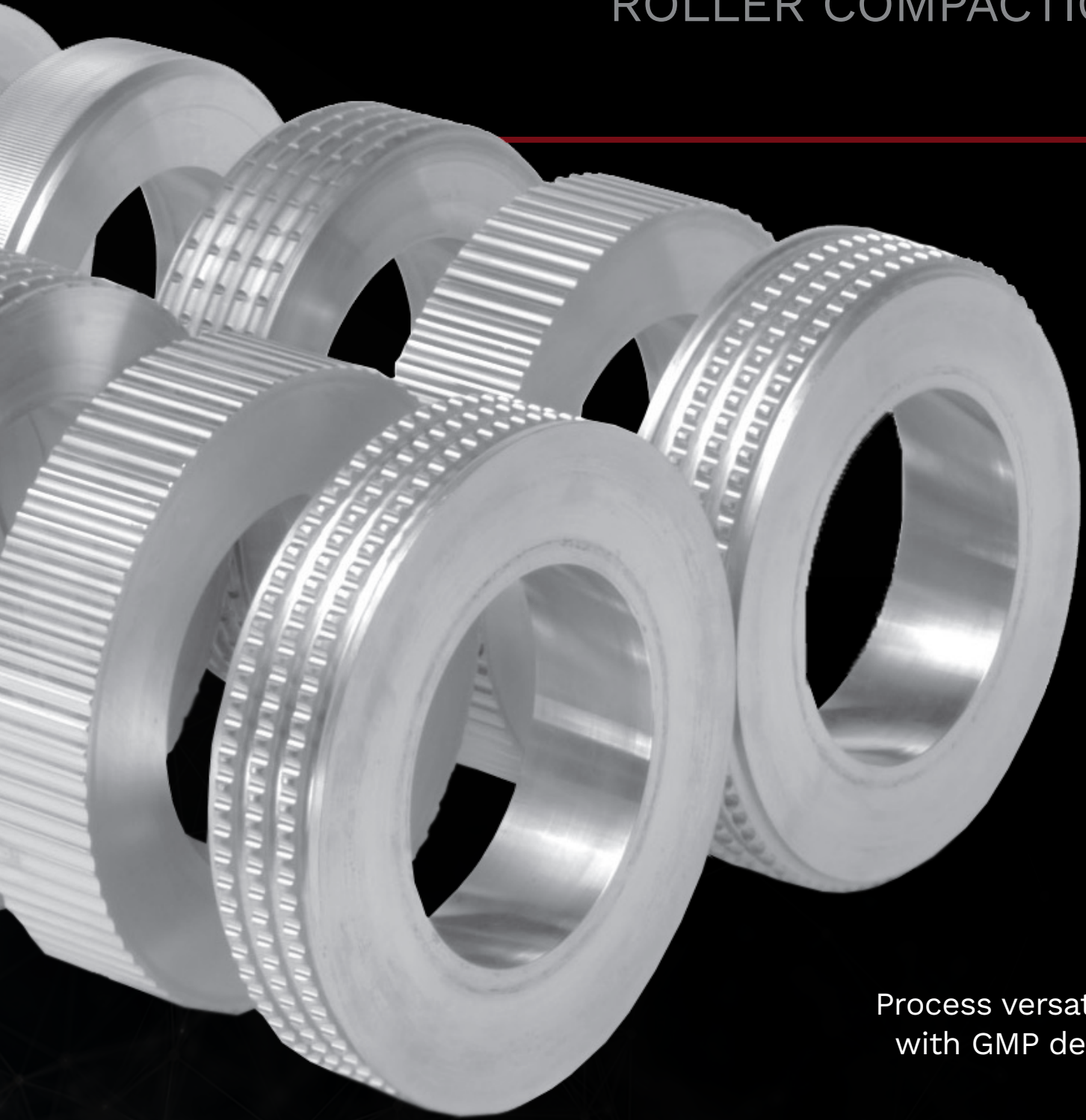


IR-SERIES

HIGH-PERFORMANCE
ROLLER COMPACTION



Process versatility
with GMP design

FITZPATRICK

FITZPATRICK IR-SERIES ROLLER COMPACTORS

PROCESS VERSATILITY WITH GMP DESIGN

Budget-friendly, industrial strength, high-performance dry granulation from the most trusted name in roller compaction technology for more than 70 years.

Fitzpatrick is committed to improving the performance and profitability of our customers' powder processing operations.

We continually invest in customer-driven innovative solutions and provide long-term global support via our highly technical customer service and spare parts network.

Fitzpatrick IR520

- Ideal for medium volume production or proof of concept work
- Manufactured with Fitzpatrick high-precision, twin feed screw system
- Choice of FitzMill™ knife or bar rotors for milling flexibility
- Easy-clean design
- Complete disassembly of all contact parts enables thorough cleaning that is quick and easy
- Optional vacuum deaeration for low bulk density powders
- Results are directly scalable to larger production equipment
- Available as both a free-standing or portable model

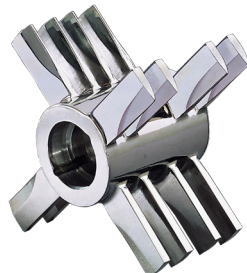
Fitzpatrick IR4x10

- Ideal for full-scale production volumes where containment is less critical
- Strong and robust design with legendary Fitzpatrick longevity
- Flexible options for integral mill to handle an extensive range of powders
- Manufactured with the Fitzpatrick high-precision, twin feed screw system
- Available as a free-standing model only
- Easy-clean features
- Optional vacuum deaeration for low bulk density powders

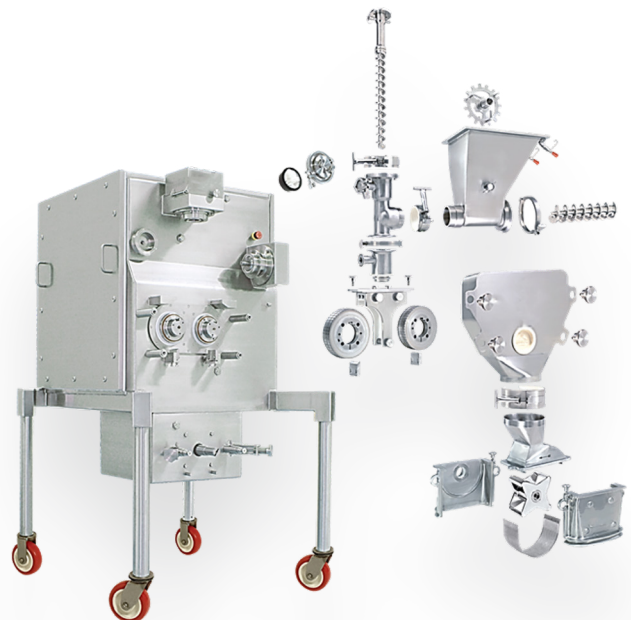
Fitzpatrick offers two milling styles for maximum flexibility:



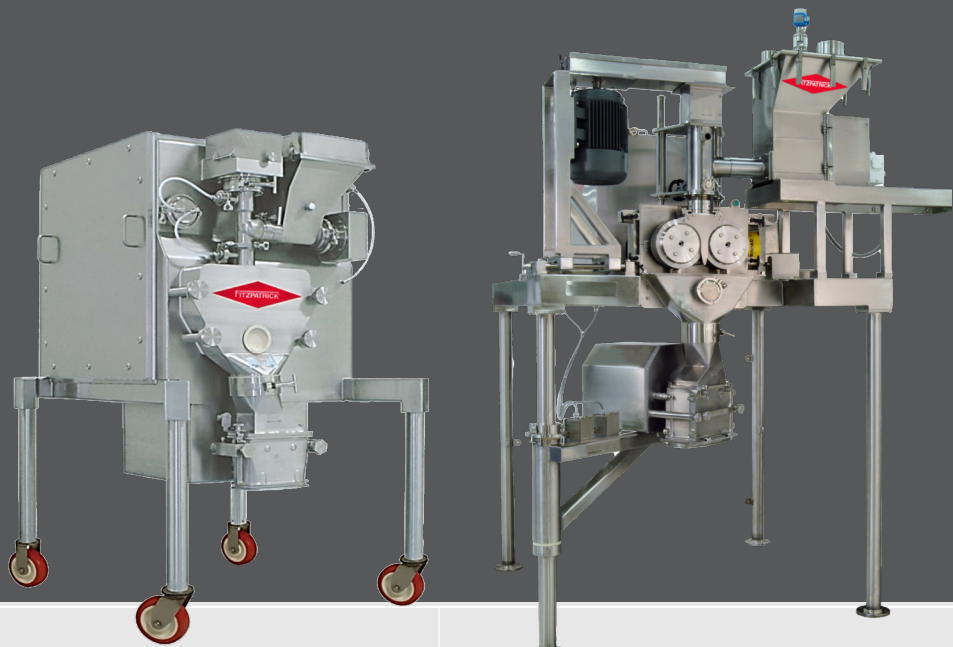
Bar Rotor
for slow-speed 'shearing'
of compact



Knife Rotor
for 'in air' impact
of harder compacts



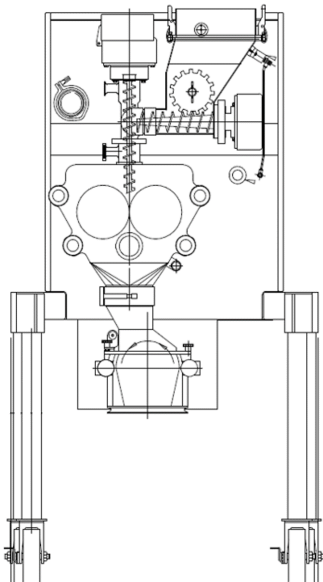
TECHNICAL DATA



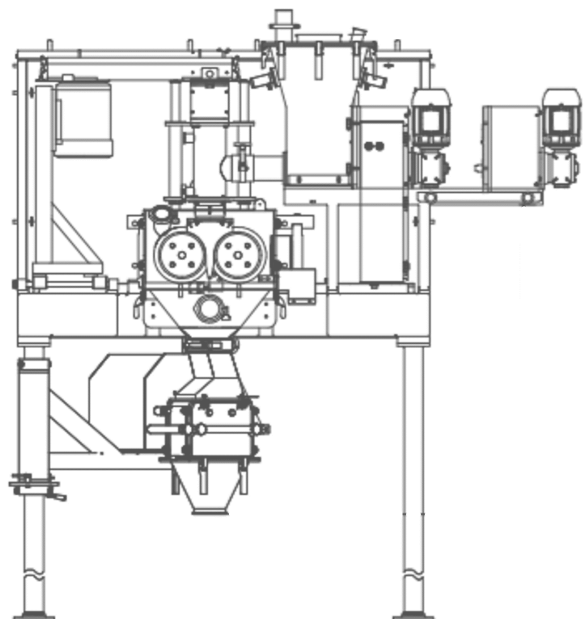
Standard Models		IR520	IR4x10
Dimensions* L x W x H	cm	133 x 120 x 214	190 x 248 X 417
	(in)	(53 x 48 x 85)	(74 x 98 x 165)
Weight	kgs	1361	3266
	(lbs)	(3000)	(7200)
Capacity**	kgs / hr	150	250 – 400
	(lbs / hr)	(330)	(551 – 882)
Performance	kN / cm	26.3	17.5
	Lbf / in	15,000	10,000
	Roll Size cm	5 x 20	10.16 x 26.2
	Surface Area cm ²	314	811
	Roll Gap mm	1 - 6	1 - 6
Mill		M5A, D6A	D6A
Mill Options		225 FitzMill™ Knife or 8 Bar Rotor	225 FitzMill™ Knife or 6 Bar Rotor

*NOTE: Dimensions are approximate and include machine legs.

**NOTE: Results may vary.

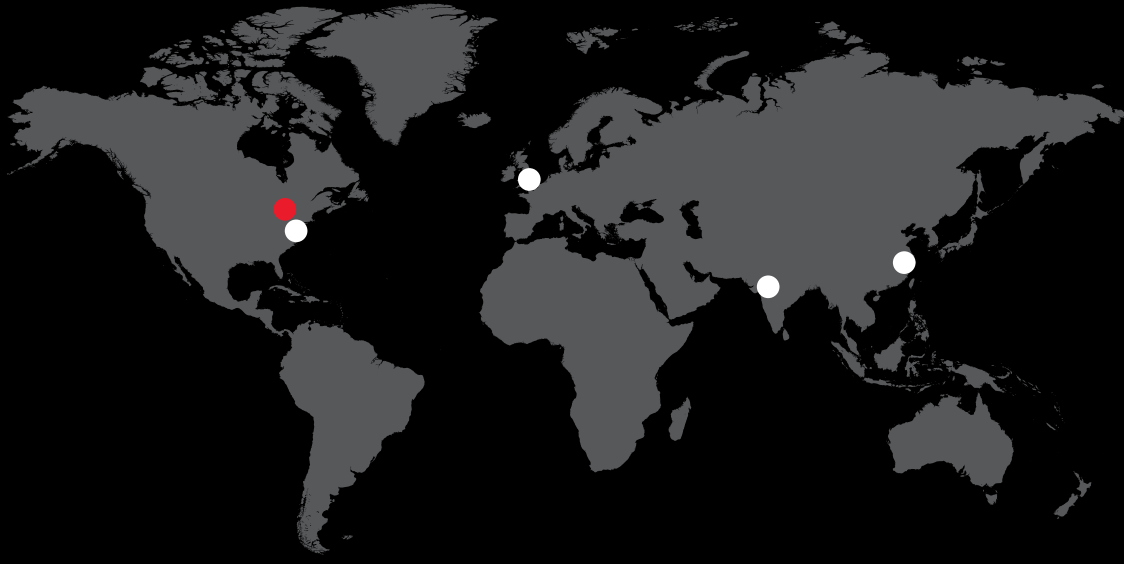


IR520 ROLLER COMPACTOR



IR4x10 ROLLER COMPACTOR

FITZPATRICK WORLD-LEADING EXPERTISE AND SUPPORT



At Fitzpatrick we are committed to improving the performance and profitability of our customer's powder processing operations.

Our customers are supported by world-leading applications and development experts, and we continually invest in customer-driven innovative solutions to address market needs.

We are committed to offering long-term support services through a highly-technical customer service and spare parts network team.

Discover and experience the Fitzpatrick difference!

● Headquarters

● IDEX MPT Centers of Excellence

Representation in over 80 countries worldwide

The Fitzpatrick Company
Tel: +1.519.884.9660
Email: fitzinfo@idexcorp.com
www.fitzpatrick-mpt.com

613 Colby Drive
Waterloo, ON, Canada

IR-SERIES 09/20



Material Processing Technologies

Fitzpatrick | Matcon | Microfluidics | Quadro | Steridose